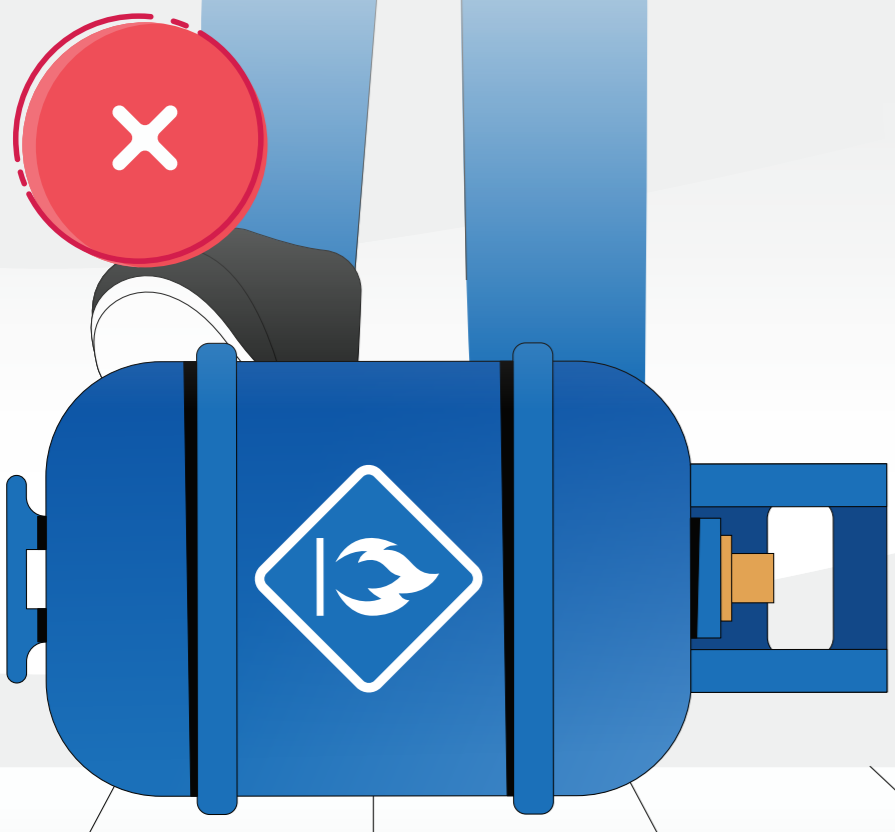




YOUR SAFETY IS OUR PRIORITY

Stay informed about gas safety.

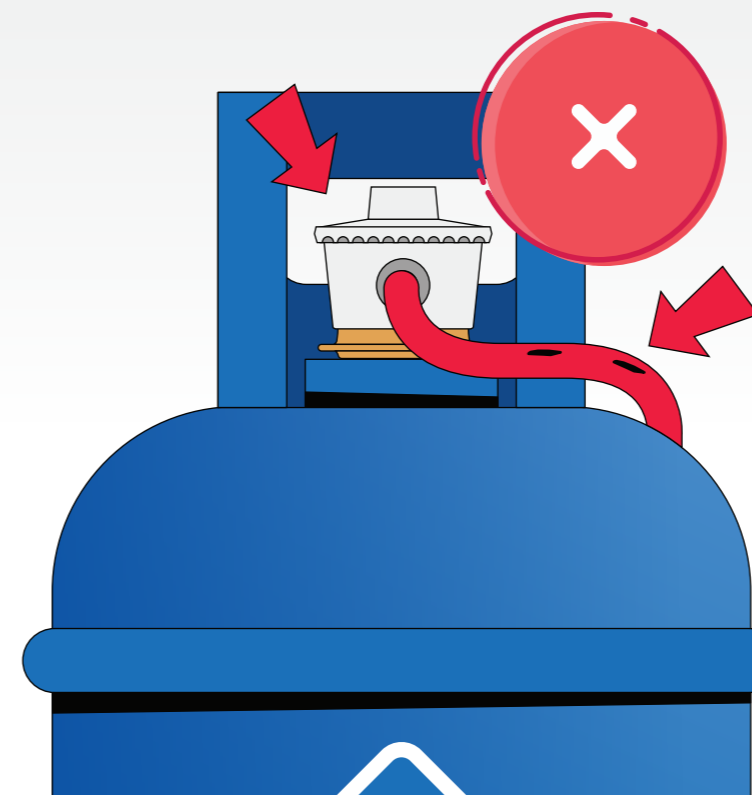
Don't throw or roll the gas cylinder.



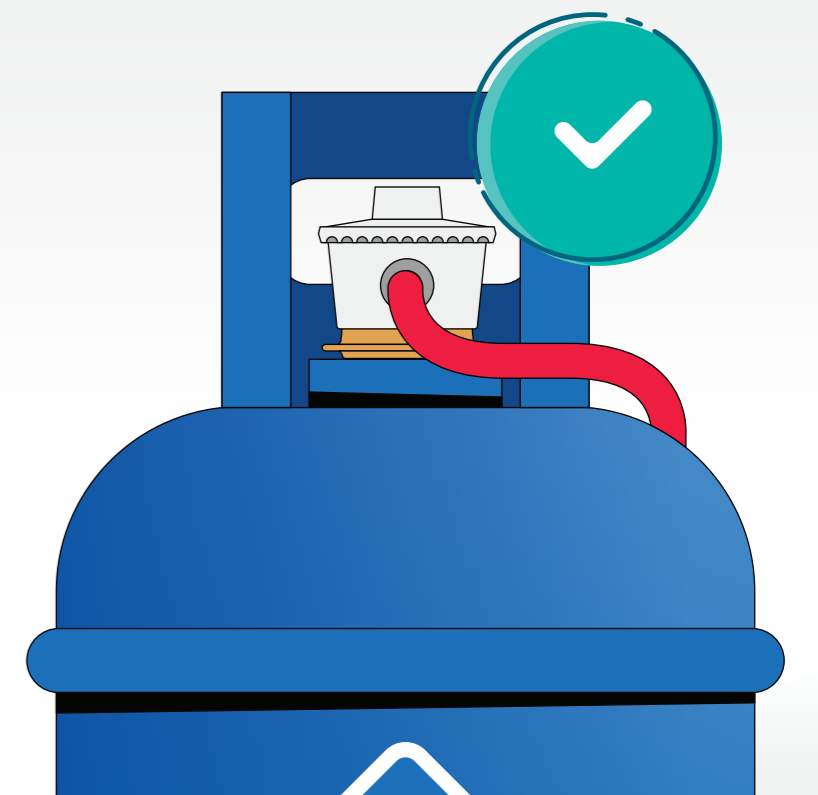
Do use safe handling when transporting the gas cylinder and ask for assistance if heavy.



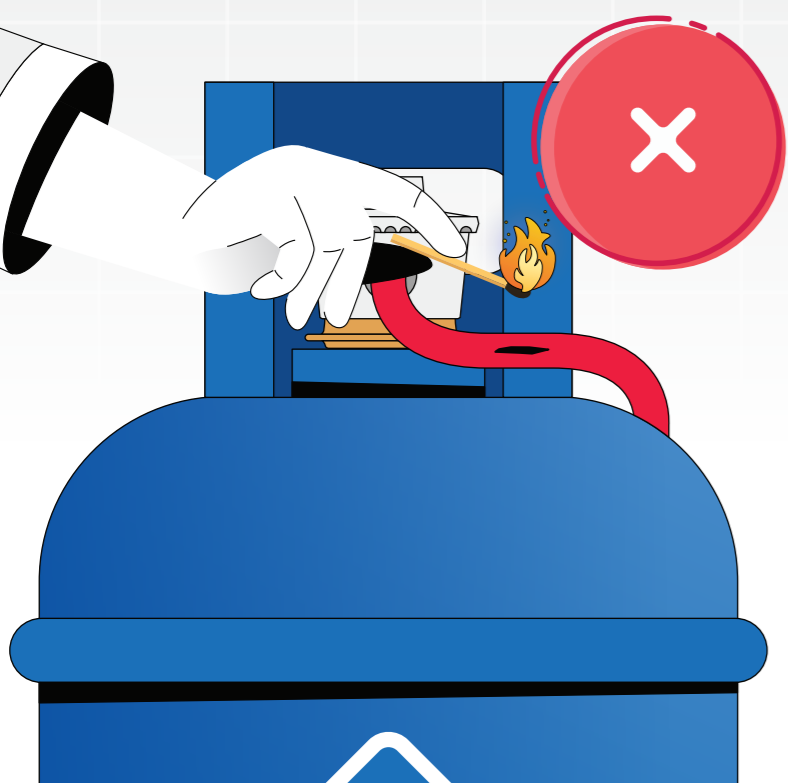
Don't neglect regular checks of the hose and valve (regulator).



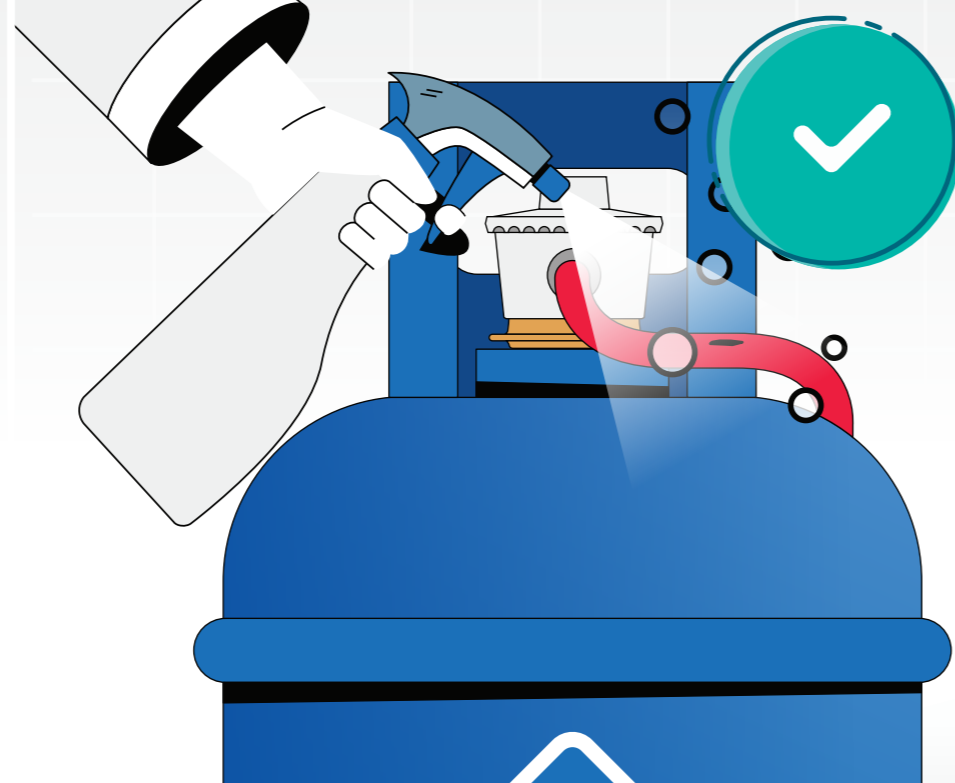
Do check the hose and valve (regulator) periodically.



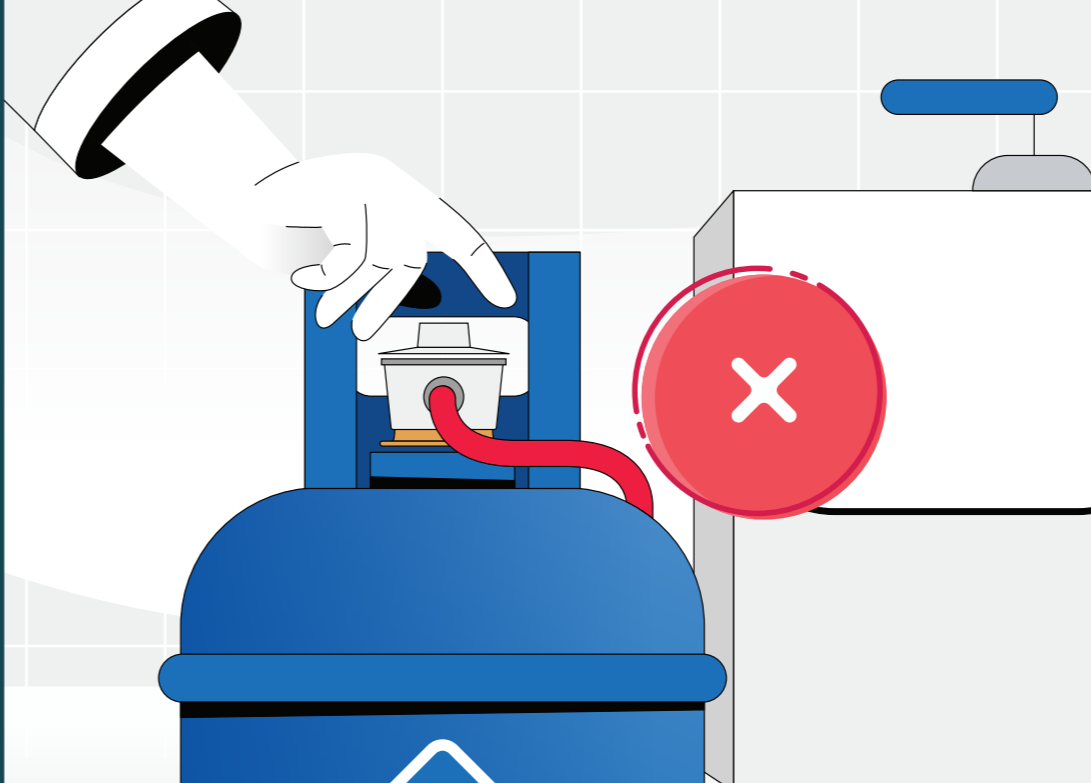
Don't ever use a flame to check for gas leaks.



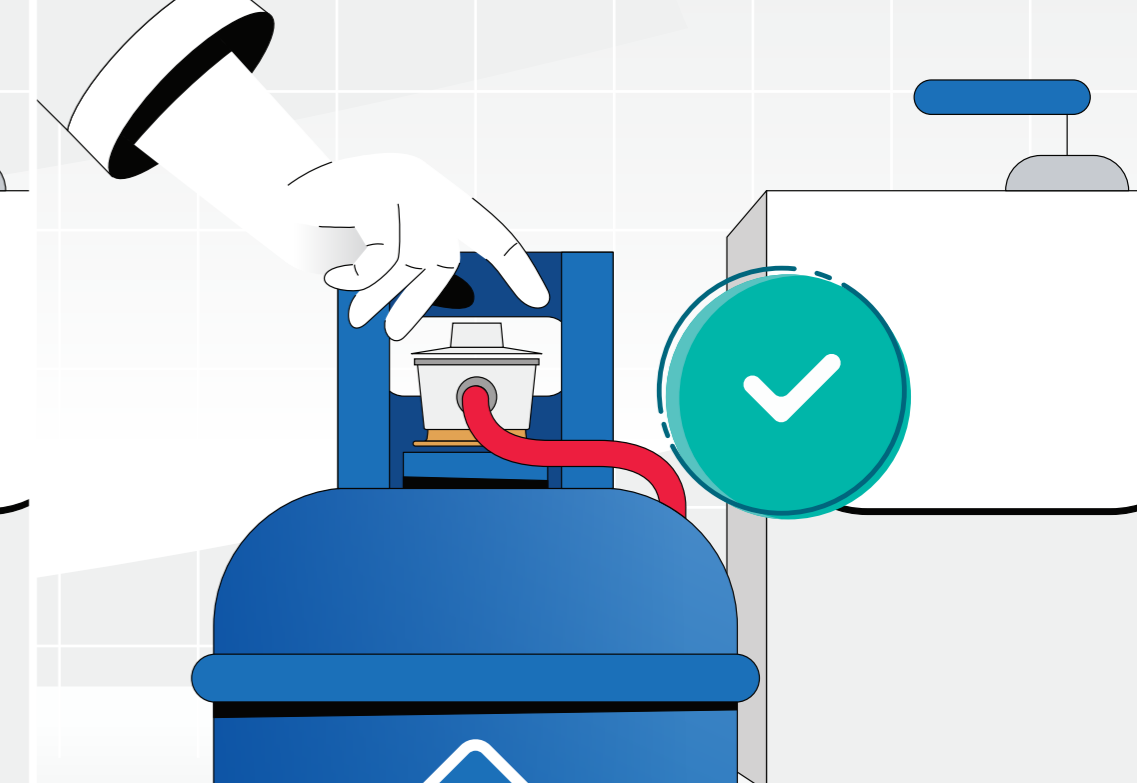
Do check for any gas leaks using soapy water or a gas detector.



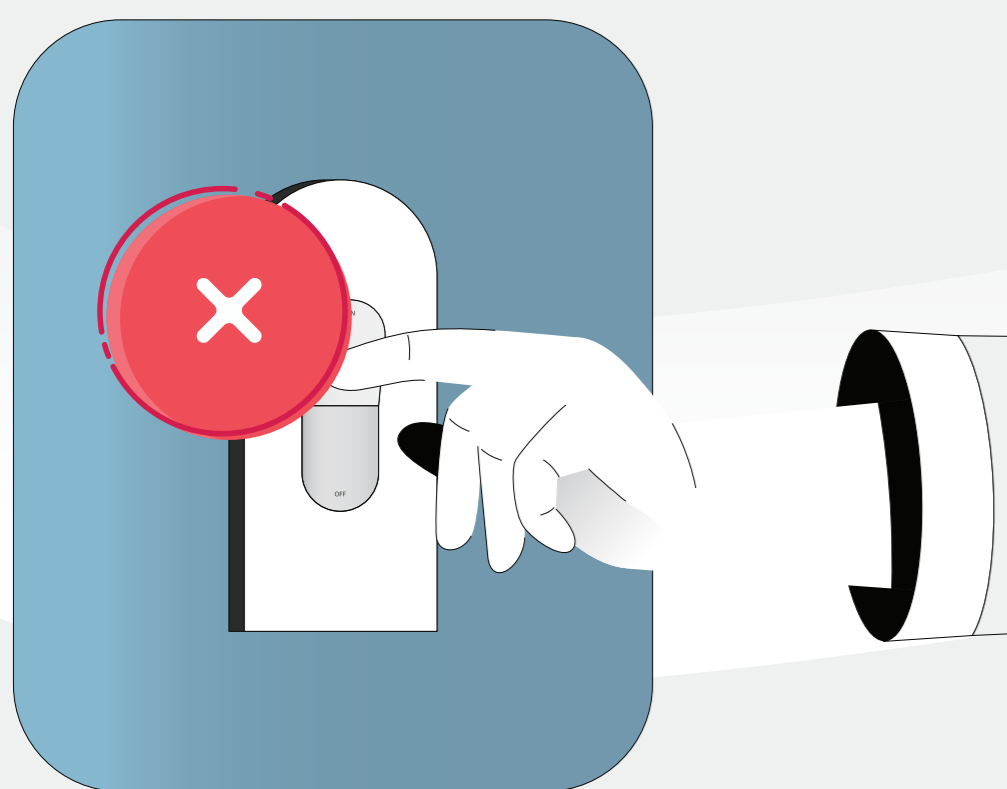
Don't leave the cylinder valve open after finishing use.



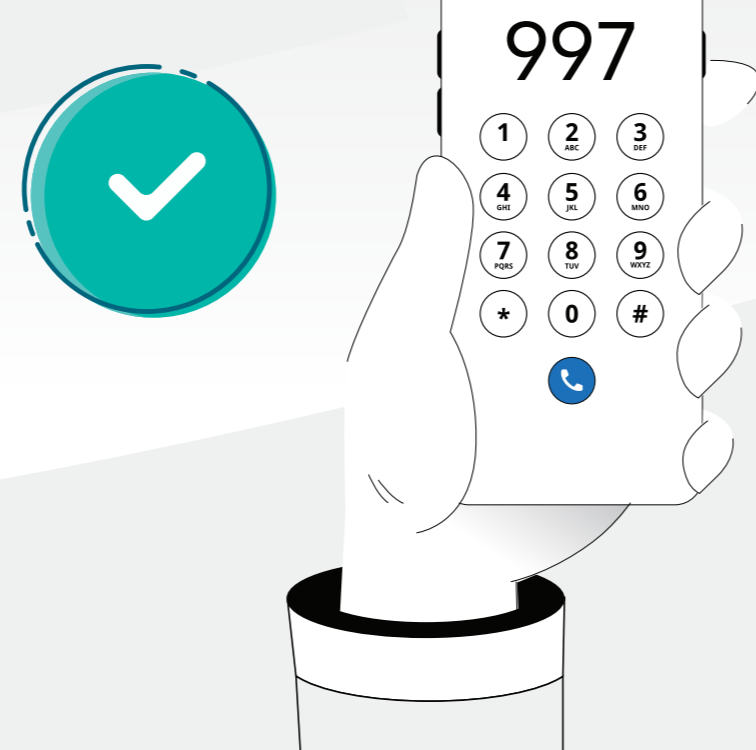
Do close the cylinder valve after every use.



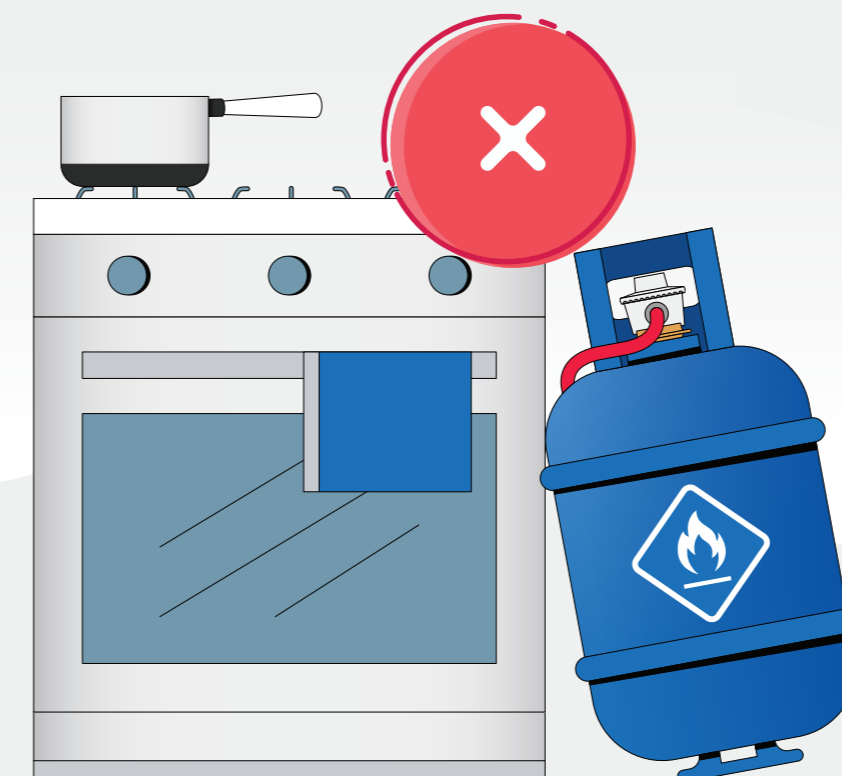
Don't turn on or off any electric devices during a gas leak.



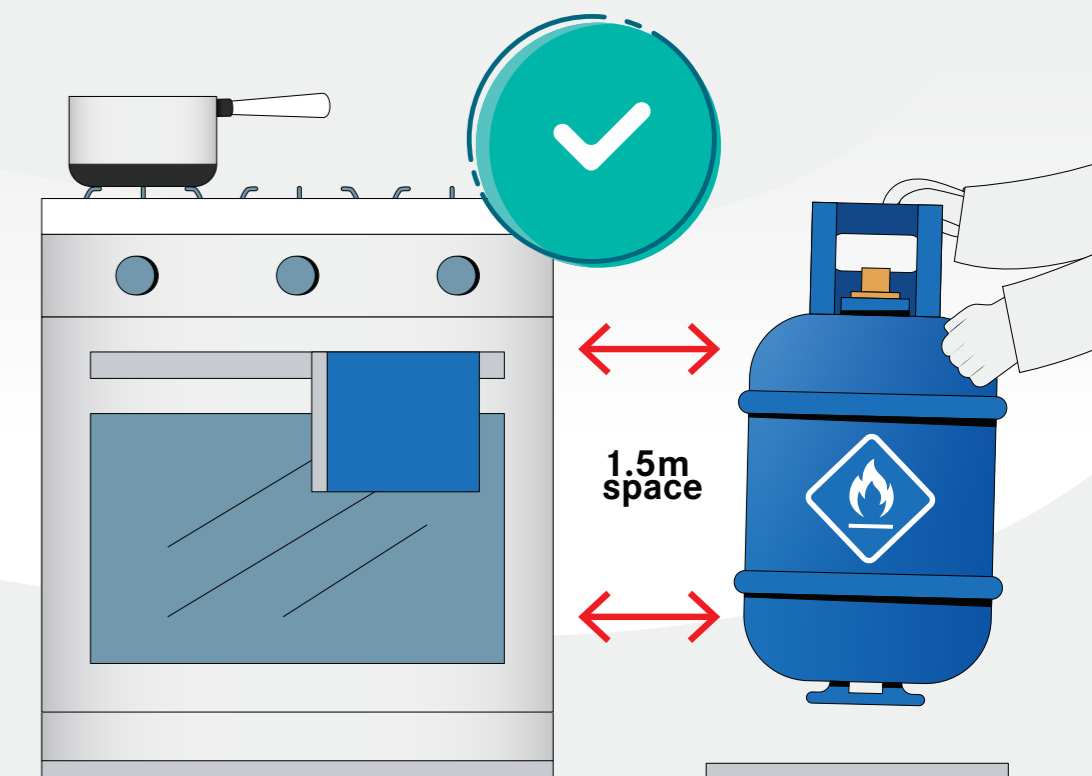
Do avoid turning any electric devices on or off if you smell gas. Instead, close the valve and call 997 immediately.



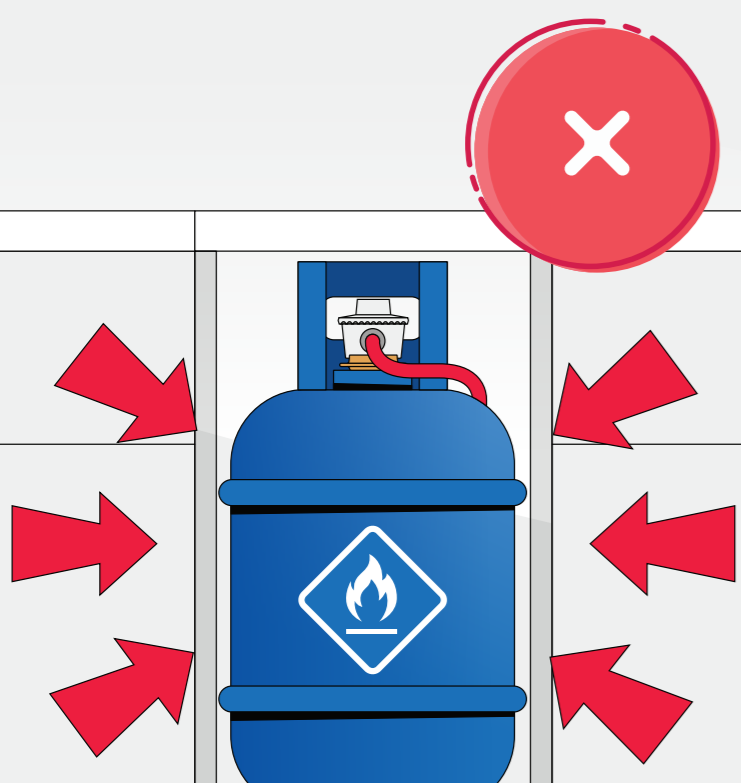
Don't place the gas cylinder in an unstable or horizontal position.



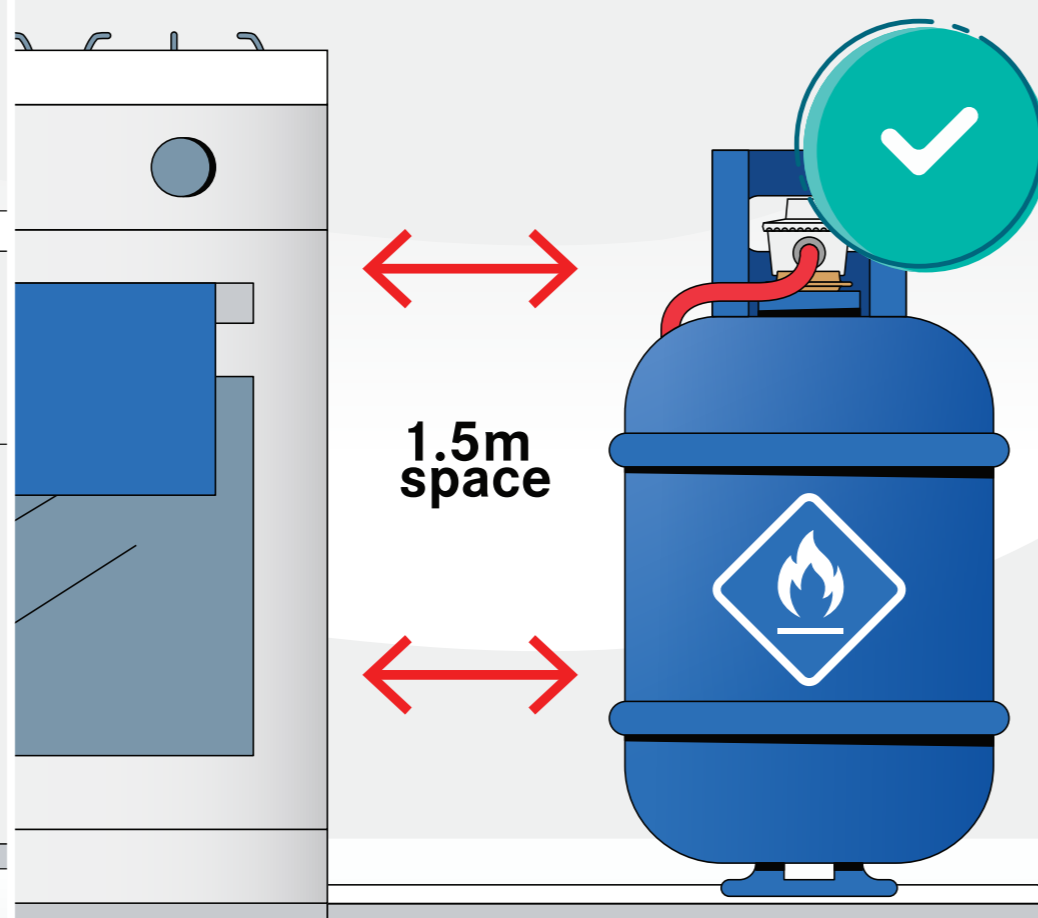
Do position the gas cylinder upright and steady.



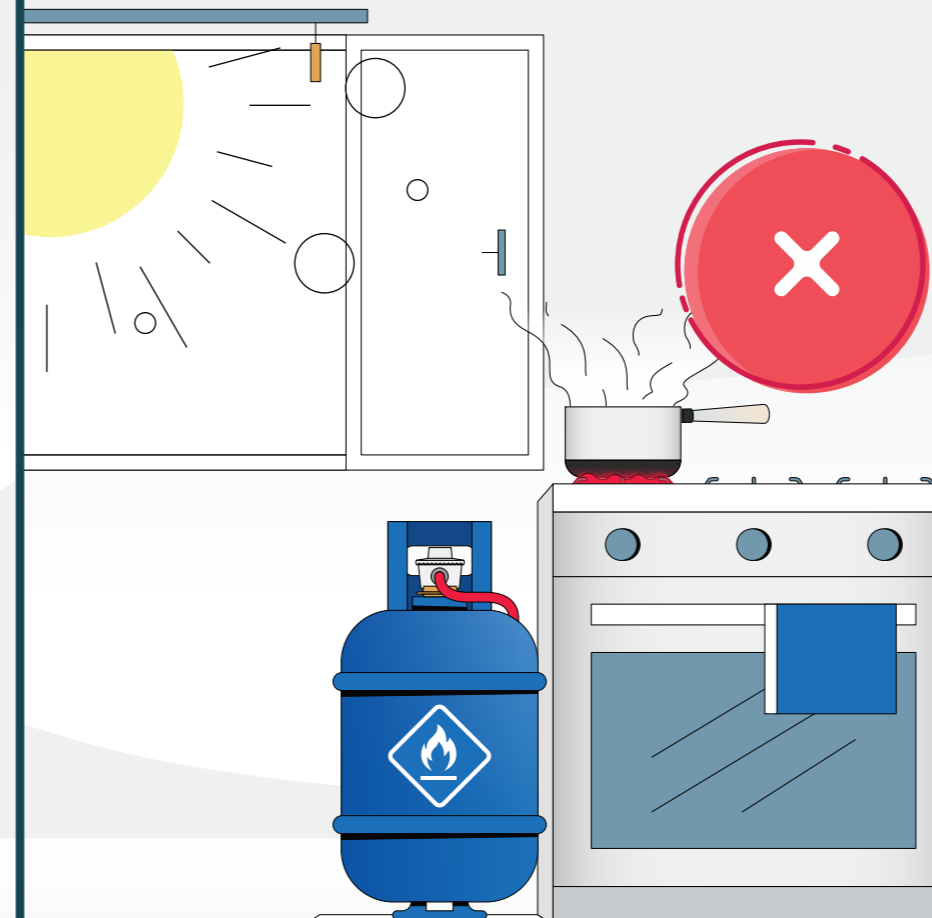
Don't store the gas cylinder indoors or in closed areas.



Do place the gas cylinder safely in its designated area.



Don't place the cylinder near sunlight or flame sources.



Do place the cylinder in a well-ventilated area.

